

The Moravian and Silesian Region viewed through Unemployment

PAVLÍNA PELLEŠOVÁ*

ANNOTATION. The article deals with the analysis of the problems related to unemployment in the Moravian and Silesian Region in the Czech Republic. We have analysed the problems by means of age and education structure of population and thereafter by means of the sector structure. The analysis results provide evidence that the sector structure as well as the age structure of population in the Region shows similar tendencies like in the Czech Republic. The education structure of the Region's population reflects the previous orientation of the Region to mining and raw material exploitation and carries along a number of problems related to the structural unemployment as a result of the Region's restructuring. The unemployment rate in the Region exceeds the national average and the individual areas of the Region achieve double amounts. In addition, the analysis indicates that the wage level in the Region when compared to the CZ develops similarly in the individual sectors; the differences tend to deepen, however. The benefits of solution of these problems may be seen in the increasing interest of foreign investors in the Region, namely in the area of modern manufacturing industry and sophisticated sectors.

KEY WORDS. Czech Republic, Moravian-Silesian Region, population, structure, rate of economic activity, education, labours force, employment, rate of unemployment, economically inactive populations, sector, branches, free working places, average.

At the present time, the Moravian-Silesian Region accounts for 12.4 % in the population of the Czech Republic. Considering the age structure, it has the highest number of inhabitants in the Czech Republic and in region in the productive age, i.e. approx. 70—71 %. The rate of economic activity of population in the Moravian-Silesian Region (MSR) has got a decreasing tendency like the whole number of population but also according to the structure by gender. In 1999 — 2006, the rate of economic activity decreased from 60.99 % to 59.4 % in the Czech Republic (CR) and in the region from 59.16 % to 57.30 %. This decrease was higher among men then women, Chart 1 and Graph 1. The labour force shows analogical tendency like the rate of economic activity (Chart 2). On the contrary, economically inactive population (population until finishing the studies and population in after-productive age) — Graph 2 has got a slightly rising tendency in the Czech Republic and in Moravian-Silesian Region, Chart 3.

* Pavlína Pellešová, doc., Ing., Ph.D., Associate Professor, School of Business Administration in Karviná Silesian University in Opava. At the present time, she is the Deputy Head of the Doctoral Studies Institute and Department of Economics Secretary, she teaches the following courses: Microeconomics, Macroeconomics, Economic Policy, Applied Economic Policy, etc.

Chart 1

Rate of economic activity in %¹⁰

	1999	2000	2001	2002	2003	2004	2005	2006
<i>Czech Republic</i>	61,00	60,40	60,00	59,80	59,40	59,20	59,40	59,30
— <i>men</i>	69,8	69,3	68,7	68,4	68,7	68,6	69,8	69,3
— <i>women</i>	51,6	50,9	50,8	50,5	50,6	50,5	51,6	50,9
<i>Moravian-Silesian Region</i>	59,20	58,60	58,60	58,70	58,08	57,6	58,50	57,30
— <i>men</i>	67,1	67,3	66,2	65,7	66,1	65,7	67,1	67,3
— <i>women</i>	50,6	50,6	50,4	50,1	51,3	49,5	50,6	50,6
<i>Aged:</i>								
15—19 years	19,3	12,2	11,2	8,5	9,8	8,0	10,1	9,9
20—24 years	67,4	70,1	69,8	65,1	62,9	60,8	58,1	56,8
35—39 years	92,3	92,4	93,2	93,1	91,1	93,0	93,5	92,1
45—49 years	90,1	89,6	90,4	92,2	91,5	88,5	92,2	92,6
60—64 years	10,2	9,7	12,2	14,9	10,9	10,5	14,2	14,5
<i>Education:</i>								
<i>Primary education</i>	25,5	23,5	23,2	22,2	21,7	21,2	22,4	21,8
<i>Secondary school</i>	69,9	69,4	69,2	70	68,8	67,1	67,1	66,3
<i>Secondary school and general education («A» levels)</i>	68,4	69,2	68,9	68,9	66,7	66,8	67,7	65,6
<i>University</i>	77,5	77,5	79,7	79,6	78,9	77,7	80,0	74,2

¹⁰ Source: <http://www.czso.cz/xt/ediciplan.nsf/p/13-8101-07>, own.

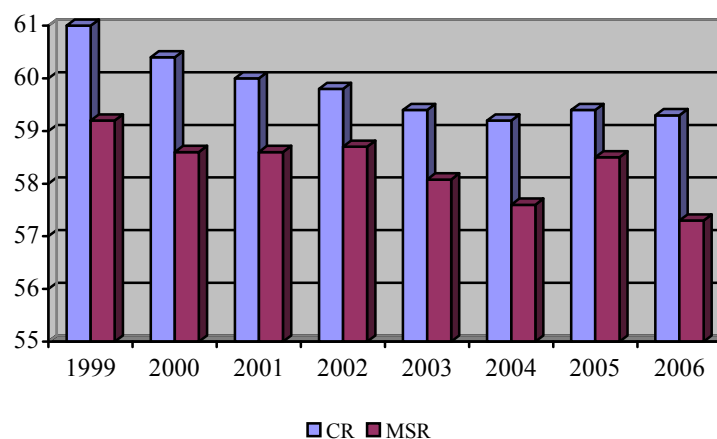
Graph 1. Rate of economic activity in the CR and in the MSR in %¹¹

Chart 2

Labour force (in thousand persons)¹²

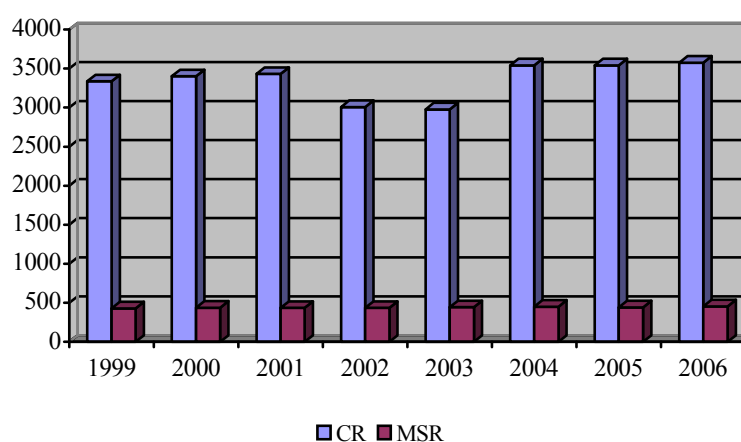
		total	women
1999	<i>Czech Republic</i>	5218,2	2312,6
	<i>Moravian-Silesian Region</i>	623,4	275,9
2000	<i>Czech Republic</i>	5186,1	2298,8
	<i>Moravian-Silesian Region</i>	619,4	276,1
2001	<i>Czech Republic</i>	5146,0	2278,7
	<i>Moravian-Silesian Region</i>	616,2	273,8
2002	<i>Czech Republic</i>	5139,1	2269,4
	<i>Moravian-Silesian Region</i>	618,9	275,5
2003	<i>Czech Republic</i>	5132,3	2271,5
	<i>Moravian-Silesian Region</i>	615,0	275,5
2004	<i>Czech Republic</i>	5132,5	2268,2
	<i>Moravian-Silesian Region</i>	611,7	274,2
2005	<i>Czech Republic</i>	5174,2	2282,0
	<i>Moravian-Silesian Region</i>	622,0	281,3
2006	<i>Czech Republic</i>	5199,4	288,4
	<i>Moravian-Silesian Region</i>	610,0	271,1

¹¹ Source: own.¹² Source: www.czso.cz, own.

Chart 3

**Economically inactive populations
(in thousand persons)¹³**

	1999	2000	2001	2002	2003	2004	2005	2006
<i>Czech Republic</i>	3337,10	3400,30	3431,40	3007,70	2977,70	3540,8	3541,5	3 574,0
<i>Moravian-Silesian Region</i>	430,40	437,80	436,10	436,2	443,8	449,9	442,1	454,1



Graph 2 Economically inactive populations
in the CZ and in the MSR¹⁴

Structure of population by education on basis of census reflects previous structure in the region by sectors, which was concentrated on mining and exploitation of raw materials. This is the reason why the most of population has got basic education (GCSE) or secondary school without «A — levels». This situation has changed slowly. It is increasing number of NVQ Trained population and increasing tendency has got number of population with university, (since 2006 the number in the MSR has unchanging), Chart 4, graph 3, graph 4.

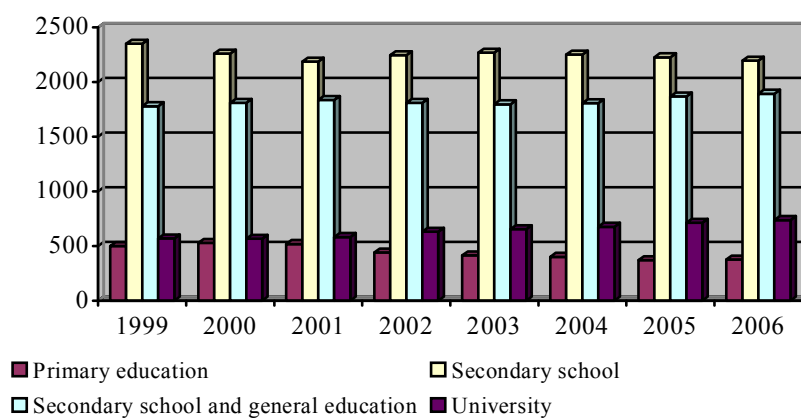
¹³ Source: <http://www.risy.cz/index.php?pid=508&language=CZ&kraj=>

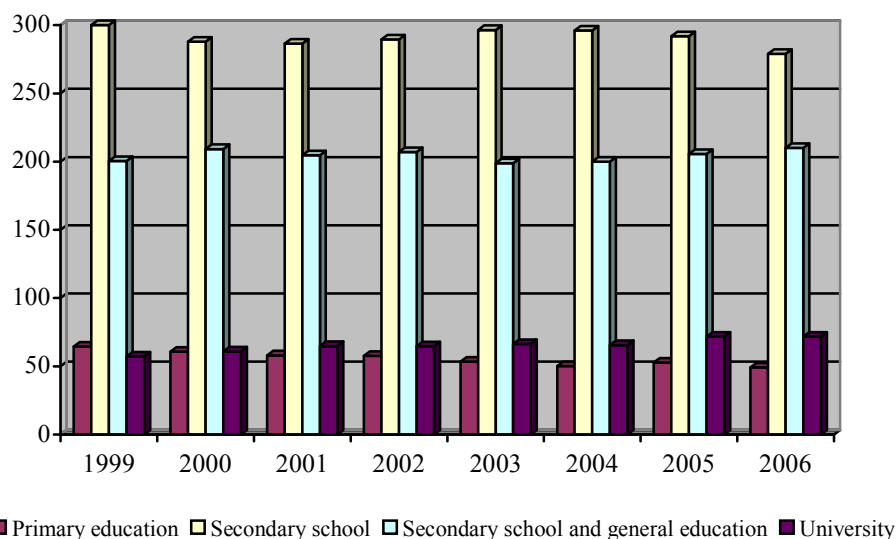
¹⁴ Source: own.

Chart 4

Labors forces by education (thousand persons)¹⁵

		Primary education	Secondary school	Secondary school and general education («A» levels)	University
1999	<i>CR</i>	499,20	2349,50	1777,90	569,10
	<i>MSR</i>	64,40	300,00	200,40	57,10
2000	<i>CR</i>	527,10	2258,90	1809,30	564,9
	<i>MSR</i>	60,70	287,90	209,20	60,80
2001	<i>CR</i>	517,00	2186,30	1835,10	581,8
	<i>MSR</i>	58,00	286,40	204,70	64,80
2002	<i>CR</i>	439,60	2245,00	1808,5	628,90
	<i>MSR</i>	57,60	289,50	206,90	64,70
2003	<i>CR</i>	413,40	2267,90	1795,20	652,60
	<i>MSR</i>	53,40	296,40	198,70	66,40
2004	<i>CR</i>	400,70	2250,30	1804,70	675,00
	<i>MSR</i>	50,20	296,00	200,00	65,50
2005	<i>CR</i>	370,40	2225,50	1866,50	711,20
	<i>MSR</i>	52,80	291,90	205,50	71,70
2006	<i>CR</i>	375,30	2 194,70	1 892,00	736,80
	<i>MSR</i>	49,30	279,00	210,00	71,70

Graph 3 Labors forces by education (thousand persons) in the CR¹⁶¹⁵ Source: www.mpsv.cz.¹⁶ Source: own



Graph 4 Labors forces by education
(thousand persons) in the Czech Republic¹⁷

On total unemployment of the Czech Republic in watched period has got Moravian-Silesian Region approximately the same share, c. 11% (1999 — 11.1 %, 2006 — 11.6 %). Employment in individual sectors of national economy has changed in the 1990's. Movement from the primary and secondary sector to tertiary sector can be seen at Chart 5 — share of employment in comparison with years 1990 and 2006 in primary sector decreased from 15.3 % to c. 4 % and in third sector increased from 42.8 % to 56 %. Undergoing structural changes are showed through further lay offs of labour force; it causes pressures on employment in the third sector. Its absorption is quite exhausted, in spite of this, the Moravian-Silesian Region belongs among the regions with the lowest employment in services (c. 15 thousand persons in year 2006), Chart 6. Solution of employment of laid off employees causes necessity to create new working places, especially in small and medium-sized businesses.

We have divided enterprises into non-financial enterprises, financial and government institutions, households and non-profit institutions which provide services to households; the highest number of employees is in non-financial institutions and the lowest number in non-profit organizations; a decrease in employment in private national institutions seems to be «alarming», it causes conditions for doing business in the Czech Republic. If we compare private and public sector, employment in private national sector is higher but has got

¹⁷ Source: own

a slightly decreasing tendency. On the other hand, private sector with foreign control has got an increasing tendency, which can be documented by super-national claims and arrival of foreign investors.

Chart 5

Structure of employment by sectors — % share

		Primary sector	Secondary sector	Tertiary sector
1999	<i>Czech Republic</i>	15,3	41,9	42,8
	<i>Moravian-Silesian Region</i>	—	—	—
2000	<i>Czech Republic</i>	6,6	39,3	54,1
	<i>Moravian-Silesian Region</i>	3,3	43,8	52,8
2001	<i>Czech Republic</i>	4,8	40,0	55,2
	<i>Moravian-Silesian Region</i>	2,6	43,6	53,7
2002	<i>Czech Republic</i>	4,8	39,6	55,6
	<i>Moravian-Silesian Region</i>	2,8	43,5	53,7
2003	<i>Czech Republic</i>	4,5	39,4	56,1
	<i>Moravian-Silesian Region</i>	3,1	45,0	52,0
2004	<i>Czech Republic</i>	4,3	39,2	56,5
	<i>Moravian-Silesian Region</i>	3,0	44,8	52,1
2005	<i>Czech Republic</i>	4,0	39,5	56,5
	<i>Moravian-Silesian Region</i>	3,1	42,6	54,3
2006	<i>Czech Republic</i>	3,5	40,6	56,0
	<i>Moravian-Silesian Region</i>	—	—	—

Chart 6

Structure of employment by sectors (in thousand persons)⁹

		Agriculture	Industry and construction	Services
1999	<i>Czech Republic</i>	247,30	1468,80	3046,70
	<i>Moravian-Silesian Region</i>	17,70	203,20	321,50
2000	<i>Czech Republic</i>	240,70	1429,40	3059,10
	<i>Moravian-Silesian Region</i>	17,40	189,50	322,90
2001	<i>Czech Republic</i>	225,10	1892,60	2607,40

	<i>Moravian-Silesian Region</i>	14,00	230,10	283,60
2002	<i>Czech Republic</i>	227,90	1888,30	2645,00
	<i>Moravian-Silesian Region</i>	14,00	233,20	288,30
2003	<i>Czech Republic</i>	213,10	1863,40	2655,40
	<i>Moravian-Silesian Region</i>	16,00	235,90	272,40
2004	<i>Czech Republic</i>	202,30	1844,60	2658,50
	<i>Moravian-Silesian Region</i>	15,90	234,30	272,50
2005	<i>Czech Republic</i>	189,40	1880,50	2692,50
	<i>Moravian-Silesian Region</i>	16,50	228,40	290,70
2006	<i>Czech Republic</i>	181,70	1929,40	2716,00
	<i>Moravian-Silesian Region</i>	14,60	236,20	286,10

Regarding the structure of sectors, the situation has not changed a lot (Chart 7) in individual branches, except for exploitation of raw materials — a decrease in the number of employees from 70.4 to 58.6 thousand. Employment in health services and social welfare, veterinary services and other public, social and personal services shows an increasing tendency. The highest increase is in branch of self-employed people (in the Czech Republic from 1.7 to 3.2 thousand persons). By gender, women have the highest share in employment. In the Moravian-Silesian Region, the manufacturing industry has had an increasing tendency from year 2000 (from 149 to 157.8 thousand persons in 2003, Chart 8). In Trade, Repairs of motor vehicles and Consumer goods, employment had an increasing tendency — from 63 thousand persons in 1999 to 67 thousand persons in 2002. An Increasing tendency is seen also in the number of employees in Restaurants and Accommodation, Real Estates, Lease, Services for enterprises, Research and development, Health services, Veterinary and Social services.

⁹ Source: <http://www.risy.cz/index.php?pid=508&language=CZ&kraj=>

Chart 7

Employees in national economy by branches in thousand persons¹⁰

Indicator	2000		2001		2002		2003		2004		2005		2006	
	totally	women	totally	women	totally	women	totally	women	totally	women	totally	women	totally	women
Employees totally	4731,60	2055,90	4727,70	2053,70	4764,90	2064,50	4733,20	2047,00	4706,6	2043,5	4764	2058,5	4828,1	2086,1
Branches														
<i>A 01 Agriculture, hunting and connected activities</i>	190,2	66,2	177,8	58,8	184,2	62,8	172,1	57,4	162,9	55	151	52,1	178,3	57,6
<i>A 02 Forestry and connected activities</i>	50,5	10,3	47,4	8,7	43,7	8,1	41,1	8,3	39,4	6,9	38,7	5,9	—	—
<i>C Exploitation of raw materials</i>	70,4	10,4	67,1	13,1	61,1	8,6	53,3	6,7	58,6	6,9	49,3	5,6	54,9	7,3
<i>D Manufacturing industry.</i>	1281,50	500,8	1310,40	504,4	1318,20	502	1294,30	495,9	1274,2	487,9	1296	483,6	1361,5	505,9
<i>E Production and distribution of electricity, gas and water</i>	77,5	17,5	87,3	21,8	83,8	20,6	77,1	16,1	76,2	14,9	76,6	17	76,7	16,7
<i>F Building</i>	439	36,5	427,7	41,5	425,2	36,7	438,7	33,4	435	33,6	459	38,7	436,3	33,3
<i>G Trade; repairs of motor vehicles and products for personal consumption</i>	612,9	328	604,9	327,6	619,8	331,3	627,8	326	630,9	323,2	615	322,6	613,6	327,2

¹⁰ Source: <http://www.risy.cz/index.php?pid=508&language=CZ&kraj=>

	2000		2001		2002		2003		2004		2005		2006	
	totally	women	totally	women	totally	women	totally	women	totally	women	totally	women	totally	women
<i>H Accommodation and board</i>	156,3	89,9	158,7	89	170,5	94,2	170,7	94,9	174,8	92,9	182	97,4	187,0	102,4
<i>I Transport, storage, communications</i>	373,2	117,4	362,6	111,7	367,6	109,7	358,8	110,4	364	118	360	110	361,0	101,7
<i>J Factoring</i>	99,6	65,7	101,4	59,8	95,2	55,8	96,3	62,1	93,6	60,8	96,5	58,6	321,3	136,3
<i>K Activities connected with properties, letting, business activities</i>	266	119,2	256	109,4	269,1	121,9	284,9	129,1	281,5	122,5	288	125,8	325,6	155,3
<i>L Public administration and defence; obligatory social security</i>	342,9	136,8	339,3	139,2	325,7	139,7	331,9	139,2	322,5	142,9	333	154,7	287,6	214,9
<i>M Education</i>	298,9	228,7	300	226,2	309,1	232,4	287,8	218,5	279	215,5	297	225,8	329,9	264,8
<i>N Health care, social welfare; veterinary services</i>	290,7	232,1	304,3	241,1	304,2	240	306,9	242,4	323,6	261,5	328	260,1	193,0	99,7
<i>O Another public, social and personal services</i>	175,8	92,6	178,2	99	179,4	96,3	185,1	101,6	184,4	96,8	190	96,7	613,6	327,2
<i>P Staff employed by households</i>	1,7	1,6	1,3	1,1	3,3	3,1	4,3	3,5	3,2	3,1	3,2	2,7	3,5	2,9
<i>Q Extraterritorial organizations and associations</i>	2	1,1	0,8	0,3	1,1	0,4	0,9	0,6	1	0,7	0,7	0,5	1,5	0,8
<i>not known</i>	2,4	1,1	2,6	0,9	3,8	0,9	1,2	0,7	1,2	--	1,5	0,5	0,9	0,8

Chart 8

Employees in national economy by branches in thousand persons in the MSR¹¹

		1999	2000	2001	2002	2003	2004	2005	2006
Employed, total		542,6	530,5	532,9	536,5	524,3	522,7	535,6	536,9
Branches									
<i>A 01 Agriculture, hunting and related service activities</i>		14,1	12,6	9,1	10,7	11,2	11,1	12,3	11,4
<i>A 02,B Forestry, fishing, operation of fish hatcheries and farms</i>		3,6	4,7	4,9	4,2	4,8	4,8	4,2	3,2
C	<i>Mining and quarrying</i>	38,0	32,0	29,9	27,7	23,9	28,1	22,0	23,8
D	<i>Manufacturing</i>	157,2	149,5	154,7	154,1	157,8	153,9	147,9	158,4
E	<i>Electricity, gas and water supply</i>	8,0	8,0	7,6	10,4	9,6	8,2	11,1	9,6
F	<i>Construction</i>	47,5	42,9	39,9	41,1	44,7	44,1	47,3	44,4
G	<i>Trade, repair of motor vehicles and personal and household goods</i>	63,0	71,2	65,9	67,0	62,1	62,0	67,0	69,1
H	<i>Hotels and restaurants</i>	15,9	13,7	16,2	18,5	21,2	19,4	19,2	16,2
I	<i>Transport, storage and communications</i>	41,5	45,1	43,1	40,7	36,9	36,1	36,2	40,9
J	<i>Financial intermediation and insurance</i>	9,4	9,5	9,1	7,5	6,1	6,9	8,2	7,4
K	<i>Real estate, renting and business activities</i>	21,5	19,9	22,1	24,2	22,0	22,0	26,9	27,1
L	<i>Public administration and defence; compulsory social security</i>	35,5	33,6	37,7	37,2	35,8	34,4	37,4	30,9
M	<i>Education</i>	36,8	36,1	37,4	36,5	32,4	32,1	36,0	35,3
N	<i>Health and social work</i>	32,1	34,3	36,9	39,2	37,9	39,0	40,6	39,7
O	<i>Other community, social and personal services</i>	17,8	16,1	17,9	17,4	17,7	20,0	18,8	19,1
P	<i>Private households with employed persons</i>	.	.	-	.	.	0,5	-	-
Q	<i>Extra-territorial organizations and bodies</i>	.	.	-	.	.	-	-	-
	<i>Not identified</i>	.	0,8	.	.	-	.	-	-

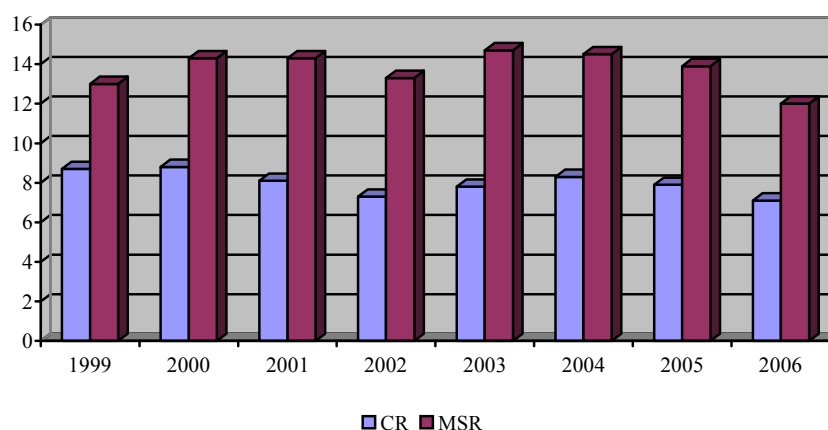
¹¹ Source: http://www.czso.cz/csu/redakce.nsf/i/statisticke_rocenky_ceske_republiky, <http://www.czso.cz/xt/ediciplan.nsf/p/13-8101-07>, own.

The rate of unemployment is analysed by age, gender and education. Rate of unemployment in the Moravian-Silesian Region always reaches the highest amount in comparison with other regions and is higher than the figures of the whole Czech Republic, reaching two-fold values, Chart 9. The rate of unemployment by gender is higher among women and it is structured by age and by education. The rate of unemployment is, as an exception, lower among women in the «elementary education» and without education categories, Chart 10 (in the Czech Republic), Graph 5.

Chart 9

General rate of unemployment (ILO) in %

Rate	1999	2000	2001	2002	2003	2004	2005	2006
<i>Czech Republic</i>	8,7	8,8	8,1	7,3	7,8	8,3	7,9	7,1
<i>Moravian-Silesian Region</i>	13,0	14,3	14,3	13,3	14,7	14,5	13,9	12,0
Men								
<i>Czech Republic</i>	7,3	7,3	6,7	5,9	6,1	7,0	6,5	5,8
<i>Moravian-Silesian Region</i>	10,5	12,3	11,8	11,0	11,5	11,9	11,2	10,1
Women								
<i>Czech Republic</i>	10,5	10,6	9,9	9,0	9,9	9,9	9,8	8,8
<i>Moravian-Silesian Region</i>	16,0	16,9	17,4	16,3	18,8	17,8	17,2	14,3



Graph 5 General rate of unemployment (ILO) in % in the CR and in the MSR¹²

¹² Source: own.

Chart 10

General rate of unemployment (ILO) in % in 2006¹³

	Total	Men	Women
<i>Moravian-Silesian region</i>	12,0	10,1	14,3
Specific rates of unemployment in the Czech Republic			
<i>Age groups</i>	Total	Men	Women
<i>15—19</i>	38,6	38,2	39,3
<i>20—24</i>	14,5	13,4	16,0
<i>25—29</i>	6,6	5,5	8,1
<i>30—34</i>	7,0	4,7	10,3
<i>35—39</i>	5,9	3,9	8,4
<i>40—44</i>	5,7	3,9	7,6
<i>45—49</i>	6,2	4,9	7,7
<i>50—54</i>	6,6	5,3	7,9
<i>55—59</i>	6,0	5,8	6,3
<i>60—64</i>	3,0	3,2	2,5
<i>65 and more</i>	2,5	2,0	3,5
<i>15—64</i>	7,2	5,9	8,9
<i>Education</i>	Total	Men	Women
<i>Elementary and no education</i>	24,5	26,2	23,2
<i>Secondary school without «A» levels</i>	7,7	6,1	10,7
<i>Secondary school with «A» levels</i>	4,9	3,5	6,1
<i>University</i>	2,4	2,2	2,7

The highest number of the unemployed is in the age group of 15—29 years and it is in the Czech Republic and in the Moravian-Silesian Region as well, Chart 11. The Moravian-Silesian Region has got always higher rate of unemployment than the Czech Republic's national average, because of structural difficulties and has got the first or second position in rate of unemployment. The rate of unemployment being connected the number of the unemployed, in Chart 11 we can see a comparison of the Moravian-Silesian Region with the whole Czech Republic, the number of unemployed increased in 2005. The highest number of the unemployed by education is among the unemployed with secondary education (professionally trained), c. 14% in the Moravian-Silesian Region (2006) and in the Czech Republic c. 92 %, Chart 13. The number of the unemployed decreases with higher education, this number is lowest among people with university education (2.3 %).

¹³ Source: http://www.czso.cz/csu/redakce.nsf/i/statisticke_rocenky_ceske_republiky, <http://www.czso.cz/xt/edicniplan.nsf/p/13-8101-07>, own.

Chart 11

Unemployed by age in thousand persons

Region	Year	Age	Persons
<i>Czech Republic</i>	1999	total	454.10
<i>Moravian-Silesian Region</i>	1999	total	80.90
<i>Czech Republic</i>	2000	total	454.50
<i>Moravian-Silesian Region</i>	2000	total	88.80
<i>Czech Republic</i>	2001	total	418.30
<i>Moravian-Silesian Region</i>	2001	total	88.10
<i>Czech Republic</i>	2002	total	374.10
<i>Moravian-Silesian Region</i>	2002	total	82.40
<i>Czech Republic</i>	2003	total	399.10
<i>Moravian-Silesian Region</i>	2003	total	90.70
<i>Czech Republic</i>	2004	total	425.90
<i>Moravian-Silesian Region</i>	2004	total	89.00
<i>Czech Republic</i>	2005	total	410.20
<i>Moravian-Silesian Region</i>	2005	total	86.40
<i>Czech Republic</i>	2006	total	371.30
<i>Moravian-Silesian Region</i>	2006	total	73.10
<i>Czech Republic</i>	1999	15—29 years	195.50
<i>Moravian-Silesian Region</i>	1999	15—29 years	35.60
<i>Czech Republic</i>	2000	15—29 years	185.90
<i>Moravian-Silesian Region</i>	2000	15—29 years	34.10
<i>Czech Republic</i>	2001	15—29 years	171.20
<i>Moravian-Silesian Region</i>	2001	15—29 years	35.20
<i>Czech Republic</i>	2002	15—29 years	150.00
<i>Moravian-Silesian Region</i>	2002	15—29 years	31.60
<i>Czech Republic</i>	2003	15—29 years	153.70
<i>Moravian-Silesian Region</i>	2004	15—29 years	165.10
<i>Czech Republic</i>	2004	15—29 years	31.50
<i>Moravian-Silesian Region</i>	2005	15—29 years	147.90
<i>Czech Republic</i>	2005	15—29 years	31.60
<i>Moravian-Silesian Region</i>	2006	15—29 years	122.90
<i>Czech Republic</i>	2006	15—29 years	25.50
<i>Moravian-Silesian Region</i>	1999	35—44 years	145.50
<i>Czech Republic</i>	1999	35—44 years	25.50
<i>Moravian-Silesian Region</i>	2000	35—44 years	146.40
<i>Czech Republic</i>	2000	35—44 years	30.00
<i>Moravian-Silesian Region</i>	2001	35—44 years	136.30
<i>Czech Republic</i>	2001	35—44 years	34.00

Region	Year	Age	Persons
<i>Moravian-Silesian Region</i>	2002	35—44 years	117.90
<i>Czech Republic</i>	2002	35—44 years	29.80
<i>Moravian-Silesian Region</i>	2003	35—44 years	93.50
<i>Czech Republic</i>	2004	35—44 years	134.9
<i>Moravian-Silesian Region</i>	2004	35—44 years	30.10
<i>Czech Republic</i>	2005	35—44 years	133.20
<i>Moravian-Silesian Region</i>	2005	35—44 years	28,50
<i>Czech Republic</i>	2006	35—44 years	127.20
<i>Moravian-Silesian Region</i>	2006	35—44 years	24.60
<i>Czech Republic</i>	1999	45—59 years	105.00
<i>Moravian-Silesian Region</i>	1999	45—59 years	19.10
<i>Czech Republic</i>	2000	45—59 years	116.50
<i>Moravian-Silesian Region</i>	2000	45—59 years	24.30
<i>Czech Republic</i>	2001	45—59 years	103.70
<i>Moravian-Silesian Region</i>	2001	45—59 years	18.30
<i>Czech Republic</i>	2002	45—59 years	99.80
<i>Moravian-Silesian Region</i>	2002	45—59 years	20.30
<i>Czech Republic</i>	2003	45—59 years	40.20
<i>Moravian-Silesian Region</i>	2004	45—59 years	121.0
<i>Czech Republic</i>	2004	45—59 years	26.50
<i>Moravian-Silesian Region</i>	2005	45—59 years	123.30
<i>Czech Republic</i>	2005	45—59 years	25.80
<i>Moravian-Silesian Region</i>	2006	45—59 years	115.30
<i>Czech Republic</i>	2006	45—59 years	22.40
<i>Moravian-Silesian Region</i>	1999	60 +	8.10
<i>Czech Republic</i>	1999	60 +	0.50
<i>Moravian-Silesian Region</i>	2000	60 +	5.70
<i>Czech Republic</i>	2000	60 +	0.50
<i>Moravian-Silesian Region</i>	2001	60 +	7.10
<i>Czech Republic</i>	2001	60 +	0.60
<i>Moravian-Silesian Region</i>	2002	60 +	6.40
<i>Czech Republic</i>	2002	60 +	0.80
<i>Moravian-Silesian Region</i>	2003	60 +	2.10
<i>Czech Republic</i>	2004	60 +	5.00
<i>Moravian-Silesian Region</i>	2004	60 +	0,80
<i>Czech Republic</i>	2005	60 +	5.70
<i>Moravian-Silesian Region</i>	2005	60 +	-
<i>Czech Republic</i>	2006	60 +	5.90
<i>Moravian-Silesian Region</i>	2006	60 +	0,50

Chart 12

Unemployed in thousand persons¹⁴

Year	Region	Total	Women
1999	<i>Czech Republic</i>	454,1	242,9
	<i>Moravian-Silesian Region</i>	80,9	44,2
2000	<i>Czech Republic</i>	454,5	242,9
	<i>Moravian-Silesian Region</i>	88,8	46,7
2001	<i>Czech Republic</i>	418,3	225,1
	<i>Moravian-Silesian Region</i>	88,1	47,6
2002	<i>Czech Republic</i>	374,1	204,9
	<i>Moravian-Silesian Region</i>	82,4	44,8
2003	<i>Czech Republic</i>	399,1	224,5
	<i>Moravian-Silesian Region</i>	90,7	51,7
2004	<i>Czech Republic</i>	425,9	224,7
	<i>Moravian-Silesian Region</i>	89,0	48,8
2005	<i>Czech Republic</i>	410,2	223,5
	<i>Moravian-Silesian Region</i>	86,4	48,3
2006	<i>Czech Republic</i>	371,3	202,2
	<i>Moravian-Silesian Region</i>	73,1	86,4

Chart 13

Unemployed by educational attainment in thousand persons¹⁵

Region	Year	Education	Persons
<i>Czech Republic</i>	1999	<i>Primary education</i>	102.80
<i>Moravian-Silesian Region</i>	1999	<i>Primary education</i>	17.90
<i>Czech Republic</i>	2000	<i>Primary education</i>	115.90
<i>Moravian-Silesian Region</i>	2000	<i>Primary education</i>	21.80
<i>Czech Republic</i>	2001	<i>Primary education</i>	108.40
<i>Moravian-Silesian Region</i>	2001	<i>Primary education</i>	22.00
<i>Czech Republic</i>	2002	<i>Primary education</i>	90.80
<i>Moravian-Silesian Region</i>	2002	<i>Primary education</i>	19.30
<i>Czech Republic</i>	2003	<i>Primary education</i>	92.90
<i>Czech Republic</i>	2004	<i>Primary education</i>	104.60
<i>Moravian-Silesian Region</i>	2004	<i>Primary education</i>	20.10

¹⁴ Source: http://www.czso.cz/csu/redakce.nsf/i/statisticke_rocenky_ceske_republiky,
<http://www.czso.cz/xt/ediciplan.nsf/p/13-8101-07>, own.

¹⁵ Source: http://www.czso.cz/csu/redakce.nsf/i/statisticke_rocenky_ceske_republiky,
<http://www.czso.cz/xt/ediciplan.nsf/p/13-8101-07>

Region	Year	Education	Persons
<i>Czech Republic</i>	2005	<i>Primary education</i>	98.90
<i>Moravian-Silesian Region</i>	2005	<i>Primary education</i>	23.00
<i>Czech Republic</i>	2006	<i>Primary education</i>	91.80
<i>Moravian-Silesian Region</i>	2006	<i>Primary education</i>	18.20
<i>Czech Republic</i>	1999	<i>Secondary school</i>	209.30
<i>Moravian-Silesian Region</i>	1999	<i>Secondary school</i>	38.80
<i>Czech Republic</i>	2000	<i>Secondary school</i>	202.30
<i>Moravian-Silesian Region</i>	2000	<i>Secondary school</i>	42.10
<i>Czech Republic</i>	2001	<i>Secondary school</i>	184.70
<i>Moravian-Silesian Region</i>	2001	<i>Secondary school</i>	41.50
<i>Czech Republic</i>	2002	<i>Secondary school</i>	175.90
<i>Moravian-Silesian Region</i>	2002	<i>Secondary school</i>	44.20
<i>Czech Republic</i>	2003	<i>Secondary school</i>	191.40
<i>Czech Republic</i>	2004	<i>Secondary school</i>	211.00
<i>Moravian-Silesian Region</i>	2004	<i>Secondary school</i>	49.00
<i>Czech Republic</i>	2005	<i>Secondary school</i>	102.90
<i>Moravian-Silesian Region</i>	2005	<i>Secondary school</i>	45.20
<i>Czech Republic</i>	2006	<i>Secondary school</i>	169.90
<i>Moravian-Silesian Region</i>	2006	<i>Secondary school</i>	38.00
<i>Czech Republic</i>	1999	<i>Secondary school and general education</i>	118.50
<i>Moravian-Silesian Region</i>	1999	<i>Secondary school and general education</i>	21.60
<i>Czech Republic</i>	2000	<i>Secondary school and general education</i>	116.20
<i>Moravian-Silesian Region</i>	2000	<i>Secondary school and general education</i>	21.30
<i>Czech Republic</i>	2001	<i>Secondary school and general education</i>	104.80
<i>Moravian-Silesian Region</i>	2001	<i>Secondary school and general education</i>	20.10
<i>Czech Republic</i>	2002	<i>Secondary school and general education</i>	92.80
<i>Moravian-Silesian Region</i>	2002	<i>Secondary school and general education</i>	16.80
<i>Czech Republic</i>	2003	<i>Secondary school and general education</i>	100.00
<i>Czech Republic</i>	2004	<i>Secondary school and general education</i>	95.10

Region	Year	Education	Persons
<i>Moravian-Silesian Region</i>	2004	<i>Secondary school and general education</i>	17.50
<i>Czech Republic</i>	2005	<i>Secondary school and general education</i>	95.90
<i>Moravian-Silesian Region</i>	2005	<i>Secondary school and general education</i>	15,40
<i>Czech Republic</i>	2006	<i>Secondary school and general education</i>	91.80
<i>Moravian-Silesian Region</i>	2006	<i>Secondary school and general education</i>	14.30
<i>Czech Republic</i>	1999	<i>University</i>	17.10
<i>Moravian-Silesian Region</i>	1999	<i>University</i>	1.80
<i>Czech Republic</i>	2000	<i>University</i>	16.40
<i>Moravian-Silesian Region</i>	2000	<i>University</i>	3.20
<i>Czech Republic</i>	2001	<i>University</i>	14.60
<i>Moravian-Silesian Region</i>	2001	<i>University</i>	3.10
<i>Czech Republic</i>	2002	<i>University</i>	13.70
<i>Moravian-Silesian Region</i>	2002	<i>University</i>	2.10
<i>Czech Republic</i>	2003	<i>University</i>	14.40
<i>Czech Republic</i>	2004	<i>University</i>	15.20
<i>Moravian-Silesian Region</i>	2004	<i>University</i>	2.40
<i>Czech Republic</i>	2005	<i>University</i>	16.60
<i>Moravian-Silesian Region</i>	2005	<i>University</i>	2.70
<i>Czech Republic</i>	2006	<i>University</i>	17.70
<i>Moravian-Silesian Region</i>	2006	<i>University</i>	2.60

If we compare the Region with the Czech Republic from the point of view of the number of free working places (Chart 14), then percentage number of free working places increases and in this period it increased from 4.8 % in years 1999 to 5.2 % in years 2004. The number of people who apply for a job consists in more than 50 % of men and this number exceeds in multiples the number of free working places (only 2.26 % of applicants can find a free working place), Chart 15. The number of free working places in the Moravian-Silesian Region in comparison with the Czech Republic is 5.22 %. The number of applicants for one free working place has permanently diminishes from 2003 to year 2007 (Chart 16, Picture 3) and reached the level of 39 in comparison with the Czech Republic, where the number was c. 2. The graduates are an important category in this number. The number of graduated applicants for one working place increases as well (from 2001, CR — 6.54, MSR — 30.27) and now it is one fifth, Chart 17.

Chart 14

**Number of free working places offered
by employment agencies in the Region¹⁶**

Region	31.12.1999	31.12.2000	31.12.2001	31.12.2002	31.12.2003
CR	35 100	52 060	52 084	40 651	40 188
MSR	1700	2973	2846	2301	2403
Share (%)	4.84	5.71	5.46	5.66	5.98
Region	31.12.2004	31.12.2005	31.12.2006	31.12.2007	
CR	51 203	52 164	93 425	141 066	
MSR	2674	3306	7896	10 696	
Share (%)	5.22	-	-	-	

Chart 15

**Free working places and number
of applicants in Moravian-Silesian Region¹⁷**

Indexes	1999	2000	2001	2002	2003	2004	2005	2006
Applicants (persons)	93 686	94 609	94 226	101 214	106 304	105 486	96 528	88 422
Women	44 848	45 193	45 335	48 388	51 013	52 096	91 177	46 289
Free working places	1700	2973	2566	2301	2403	2674	3306	6716
Registered rate of unemployment in %	14,94	15,13	15,11	15,89	16,84	16,85	14,23	13,02

Chart 16

Number of applicants on one free working place

Region	1999	2000	2001	2002	2003	2004	2005	2006	2007
CR	13.89	8.79	8.87	12.65	13.50	10.58	9.78	4.80	2.2
MSR	55.11	31.82	36.72	43.99	44.24	39.4	29.20	10.82	6.15

¹⁶ Source: Ministry of labour and social affairs

¹⁷ Source: http://www.czso.cz/csu/redakce.nsf/i/statisticke_rocenky_ceske_republiky,
<http://www.czso.cz/xt/edicniplan.nsf/p/13-8101-07>

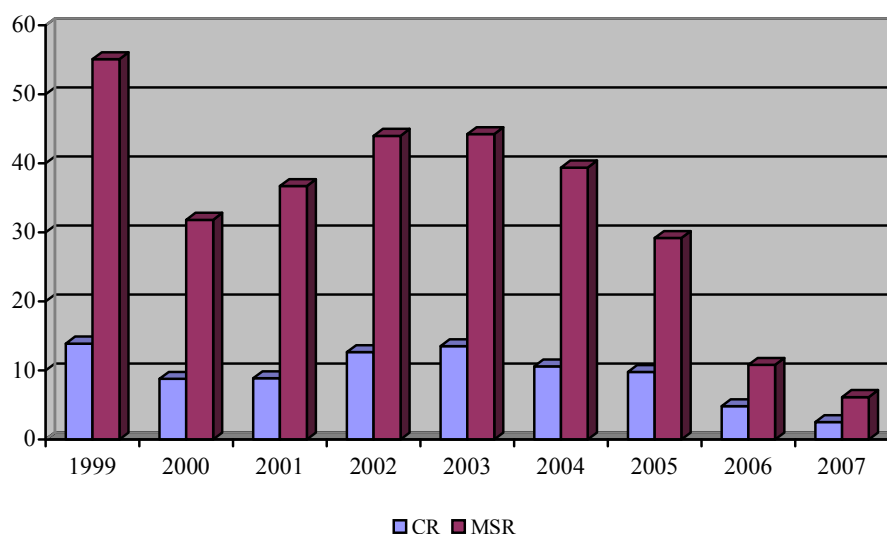
Graph 6 Number of applicants for one free working place¹⁸

Chart 17

Number of graduated applicants for one working place¹⁹

Region	1999	2000	2001	2002	2003	2004	2005	2006	2007
CR	9.86	8.58	6.54	8.11	8.20	7.84	4.91	1.83	0.77
MSR	39.33	36.93	30.27	34.21	42.73	28.00	14.57	5.07	1.84

Moravian-Silesian region reaches in comparison with the Czech Republic lower levels of average monthly salary, which has been continuously increasing (CZK 22908), Chart 18. The Region has got the lowest rate of growth because it is affected most by negative impacts of restructuring. In the individual branches, the highest salaries are in banking and insurance; on the other hand, the lowest salaries are in agriculture, Chart 19.

Chart 18

Average monthly salaries of employees in sectors of national economy in the Moravian-Silesian Region in CZK²⁰

Indexes	1999	2000	2001	2002	2003	2004	2006	2006 (CR)
Average gross monthly salary	12 351	12 966	14 049	14 953	15 837	16 909	20 811	22 908

Chart 19

¹⁸ Source: own.¹⁹ Source: http://www.czso.cz/csu/redakce.nsf/i/statisticke_rocenky_ceske_republiky, <http://www.czso.cz/xt/edicniplan.nsf/p/13-8101-07>²⁰ Source: www.kr.moravskolsezsky.cz, www.czso.cz.

Region	Year	Branches	Average
<i>Czech Republic</i>	1999	Industry	—
<i>Moravian-Silesian Region</i>	1999	Industry	13 617.00
<i>Czech Republic</i>	2000	Industry	13 544.00
<i>Moravian-Silesian Region</i>	2000	Industry	14 328.00
<i>Czech Republic</i>	2001	Industry	14 490.00
<i>Moravian-Silesian Region</i>	2001	Industry	15 383.00
<i>Czech Republic</i>	2002	Industry	15 342.00
<i>Moravian-Silesian Region</i>	2002	Industry	16 255.00
<i>Czech Republic</i>	2003	Industry	15 014.00
<i>Moravian-Silesian Region</i>	2003	Industry	16 363.00
<i>Czech Republic</i>	2004	Industry	16 304.00
<i>Moravian-Silesian Region</i>	2004	Industry	17 014.00
<i>Czech Republic</i>	2005	Industry	16 753.00
<i>Moravian-Silesian Region</i>	2005	Industry	17 811.00
<i>Czech Republic</i>	1999	Agriculture, hunting and forestry	—
<i>Moravian-Silesian Region</i>	1999	Agriculture, hunting and forestry	9395.00
<i>Czech Republic</i>	2000	Agriculture, hunting and forestry	10 367.00
<i>Moravian-Silesian Region</i>	2000	Agriculture, hunting and forestry	9950.00
<i>Czech Republic</i>	2001	Agriculture, hunting and forestry	11 314.00
<i>Moravian-Silesian Region</i>	2001	Agriculture, hunting and forestry	10 881.00
<i>Czech Republic</i>	2002	Agriculture, hunting and forestry	14 897,00
<i>Moravian-Silesian Region</i>	2002	Agriculture, hunting and forestry	10 950.00
<i>Czech Republic</i>	2003	Agriculture, hunting and forestry	15 832,00
<i>Moravian-Silesian Region</i>	2003	Agriculture, hunting and forestry	10 950.00
<i>Czech Republic</i>	2004	Agriculture, hunting and forestry	12 404.00
<i>Moravian-Silesian Region</i>	2004	Agriculture, hunting and forestry	15 841.00
Region	Year	Branches	Average

<i>Czech Republic</i>	2005	Agriculture, hunting and forestry	16 543.00
<i>Moravian-Silesian Region</i>	2005	Agriculture, hunting and forestry	13 571.00
<i>Czech Republic</i>	1999	Construction	—
<i>Moravian-Silesian Region</i>	1999	Construction	12 023.00
<i>Czech Republic</i>	2000	Construction	13 602.00
<i>Moravian-Silesian Region</i>	2000	Construction	12 775.00
<i>Czech Republic</i>	2001	Construction	14 715.00
<i>Moravian-Silesian Region</i>	2001	Construction	13 924.00
<i>Czech Republic</i>	2002	Construction	15 695.00
<i>Moravian-Silesian Region</i>	2002	Construction	15 698.00
<i>Czech Republic</i>	2003	Construction	16 852.00
<i>Moravian-Silesian Region</i>	2003	Construction	14 642.00
<i>Czech Republic</i>	2004	Construction	16 040.00
<i>Moravian-Silesian Region</i>	2004	Construction	14 659.00
<i>Czech Republic</i>	2005	Construction	16 547.00
<i>Moravian-Silesian Region</i>	2005	Construction	15 612.00
<i>Czech Republic</i>	1999	Wholesale and retail trade; repair of motor vehicles, motorcycles and personal and household goods	neuvedeno
<i>Moravian-Silesian Region</i>	1999	Wholesale and retail trade; repair of motor	9581.00
<i>Czech Republic</i>	2000	Wholesale and retail trade; repair of motor	14 119.00
<i>Moravian-Silesian Region</i>	2000	Wholesale and retail trade; repair of motor	10 740.00
<i>Czech Republic</i>	2001	Wholesale and retail trade; repair of motor	15 404.00
<i>Moravian-Silesian Region</i>	2001	Wholesale and retail trade; repair of motor	11 801.00
<i>Czech Republic</i>	2002	Wholesale and retail trade; repair of motor	16 367.00
<i>Moravian-Silesian Region</i>	2002	Wholesale and retail trade; repair of motor	13 403.00
<i>Czech Republic</i>	2003	Wholesale and retail trade; repair of motor	17 144.00
<i>Moravian-Silesian Region</i>	2003	Wholesale and retail trade; repair of motor	14 235.00
Region	Year	Branches	Average

<i>Czech Republic</i>	2004	Wholesale and retail trade; repair of motor	15 927.00
<i>Moravian-Silesian Region</i>	2004	Wholesale and retail trade; repair of motor	13 138.00
<i>Czech Republic</i>	2005	Wholesale and retail trade; repair of motor	16 711.00
<i>Moravian-Silesian Region</i>	2005	Wholesale and retail trade; repair of motor	13 958.00
<i>Czech Republic</i>	1999	Hotels and restaurants	—
<i>Moravian-Silesian Region</i>	1999	Hotels and restaurants	7222.00
<i>Czech Republic</i>	2000	Hotels and restaurants	10 480.00
<i>Moravian-Silesian Region</i>	2000	Hotels and restaurants	7917.00
<i>Czech Republic</i>	2001	Hotels and restaurants	11 387.00
<i>Moravian-Silesian Region</i>	2001	Hotels and restaurants	8159.00
<i>Czech Republic</i>	2002	Hotels and restaurants	11 997.00
<i>Moravian-Silesian Region</i>	2002	Hotels and restaurants	9006.00
<i>Czech Republic</i>	2003	Hotels and restaurants	12 405.00
<i>Moravian-Silesian Region</i>	2003	Hotels and restaurants	9222.00
<i>Czech Republic</i>		Hotels and restaurants	13 138.00
<i>Moravian-Silesian Region</i>		Hotels and restaurants	8119,00
<i>Czech Republic</i>		Hotels and restaurants	13 958.00
<i>Moravian-Silesian Region</i>		Hotels and restaurants	8273.00
<i>Czech Republic</i>	1999	Transport, storage and communications	—
<i>Moravian-Silesian Region</i>	1999	Transport, storage and communications	12 515.00
<i>Czech Republic</i>	2000	Transport, storage and communications	14 841.00
<i>Moravian-Silesian Region</i>	2000	Transport, storage and communications	13 548.00
<i>Czech Republic</i>	2001	Transport, storage and communications	16 097.00
<i>Moravian-Silesian Region</i>	2001	Transport, storage and communications	14 515.00
<i>Czech Republic</i>	2002	Transport, storage and communications	17 247.00
<i>Moravian-Silesian Region</i>	2002	Transport, storage and communications	15 028.00
<i>Czech Republic</i>	2003	Transport, storage and communications	18 281.00

Region	Year	Branches	Average
<i>Moravian-Silesian Region</i>	2003	Transport, storage and communications	15 901.00
<i>Czech Republic</i>	2004	Transport, storage and communications	19 034.00
<i>Moravian-Silesian Region</i>	2004	Transport, storage and communications	16 198.00
<i>Czech Republic</i>	2005	Transport, storage and communications	19 865.00
<i>Moravian-Silesian Region</i>	2005	Transport, storage and communications	16 775.00
<i>Czech Republic</i>	1999	Financial intermediation	—
<i>Moravian-Silesian Region</i>	1999	Financial intermediation	18 326.00
<i>Czech Republic</i>	2000	Financial intermediation	25 144.00
<i>Moravian-Silesian Region</i>	2000	Financial intermediation	20 172.00
<i>Czech Republic</i>	2001	Financial intermediation	28 726.00
<i>Moravian-Silesian Region</i>	2001	Financial intermediation	22 192.00
<i>Czech Republic</i>	2002	Financial intermediation	31 570.00
<i>Moravian-Silesian Region</i>	2002	Financial intermediation	20 263.00
<i>Czech Republic</i>	2003	Financial intermediation	33 223.00
<i>Moravian-Silesian Region</i>	2003	Financial intermediation	21 527.00
<i>Czech Republic</i>	2004	Financial intermediation	26 039.00
<i>Moravian-Silesian Region</i>	2004	Financial intermediation	34 857.00
<i>Czech Republic</i>	2005	Financial intermediation	26 879.00
<i>Moravian-Silesian Region</i>	2005	Financial intermediation	36 824.00
<i>Czech Republic</i>	1999	Real estate, renting and business activities	—
<i>Moravian-Silesian Region</i>	1999	Real estate, renting and business activities	11 065.00
<i>Czech Republic</i>	2000	Real estate, renting and business activities	15 183.00
<i>Moravian-Silesian Region</i>	2000	Real estate, renting and business activities	11 469.00
<i>Czech Republic</i>	2001	Real estate, renting and business activities	16 170.00
<i>Moravian-Silesian Region</i>	2001	Real estate, renting and business activities	12 160.00
<i>Czech Republic</i>	2002	Real estate, renting and business activities	17 510.00
<i>Moravian-Silesian Region</i>	2002	Real estate, renting and business activities	12 302.00
<i>Czech Republic</i>	2003	Real estate, renting and business activities	18 385.00

Region	Year	Branches	Average
<i>Moravian-Silesian Region</i>	2003	Real estate, renting and business activities	12 790.00
<i>Czech Republic</i>	2004	Real estate, renting and business activities	18 995.00
<i>Moravian-Silesian Region</i>	2004	Real estate, renting and business activities	14 062.00
<i>Czech Republic</i>	2005	Real estate, renting and business activities	19 824.00
<i>Moravian-Silesian Region</i>	2005	Real estate, renting and business activities	15 488.00
<i>Czech Republic</i>	1999	compulsory social security	—
<i>Moravian-Silesian Region</i>	1999	compulsory social security	13 178.00
<i>Czech Republic</i>	2000	compulsory social security	13 895.00
<i>Moravian-Silesian Region</i>	2000	compulsory social security	13 466.00
<i>Czech Republic</i>	2001	compulsory social security	15 300.00
<i>Moravian-Silesian Region</i>	2001	compulsory social security	14 715.00
<i>Czech Republic</i>	2002	compulsory social security	18 073.00
<i>Moravian-Silesian Region</i>	2002	compulsory social security	15 721.00
<i>Czech Republic</i>	2003	compulsory social security	19 484.00
<i>Moravian-Silesian Region</i>	2003	compulsory social security	16 948.00
<i>Czech Republic</i>	2004	compulsory social security	19 767.00
<i>Moravian-Silesian Region</i>	2004	compulsory social security	17 158.00
<i>Czech Republic</i>	2005	compulsory social security	21 175.00
<i>Moravian-Silesian Region</i>	2005	compulsory social security	18 271.00
<i>Czech Republic</i>	1999	Education	—
<i>Moravian-Silesian Region</i>	1999	Education	11 009.00
<i>Czech Republic</i>	2000	Education	11 282.00
<i>Moravian-Silesian Region</i>	2000	Education	11 093.00
<i>Czech Republic</i>	2001	Education	12 406.00
<i>Moravian-Silesian Region</i>	2001	Education	12 292.00
<i>Czech Republic</i>	2002	Education	13 612.00
<i>Moravian-Silesian Region</i>	2002	Education	13 459.00
<i>Czech Republic</i>	2003	Education	15 312.00
<i>Moravian-Silesian Region</i>	2003	Education	15 188.00
<i>Czech Republic</i>	2004	Education	15 980.00
<i>Moravian-Silesian Region</i>	2004	Education	15 029.00
<i>Czech Republic</i>	2005	Education	17 178.00
<i>Moravian-Silesian Region</i>	2005	Education	17 041.00
<i>Czech Republic</i>	1999	Health and social work	—

Region	Year	Branches	Average
<i>Moravian-Silesian Region</i>	1999	Health and social work	11 020.00
<i>Czech Republic</i>	2000	Health and social work	11 735.00
<i>Moravian-Silesian Region</i>	2000	Health and social work	11 317.00
<i>Czech Republic</i>	2001	Health and social work	13 361.00
<i>Moravian-Silesian Region</i>	2001	Health and social work	12 850.00
<i>Czech Republic</i>	2002	Health and social work	15 051.00
<i>Moravian-Silesian Region</i>	2002	Health and social work	14 641.00
<i>Czech Republic</i>	2003	Health and social work	16 311.00
<i>Moravian-Silesian Region</i>	2003	Health and social work	15 795.00
<i>Czech Republic</i>	2004	Health and social work	16 163.00
<i>Moravian-Silesian Region</i>	2004	Health and social work	15 682.00
<i>Czech Republic</i>	2005	Health and social work	16 670.00
<i>Moravian-Silesian Region</i>	2005	Health and social work	16 082.00
<i>Czech Republic</i>	1999	Other community, social and personal service activities	9246.00
<i>Moravian-Silesian Region</i>	1999	Other community, social and ...	neuvedeno
<i>Czech Republic</i>	2000	Other community, social and ...	11 322.00
<i>Moravian-Silesian Region</i>	2000	Other community, social and ...	9636.00
<i>Czech Republic</i>	2001	Other community, social and ...	12 112.00
<i>Moravian-Silesian Region</i>	2001	Other community, social and ...	10 297.00
<i>Czech Republic</i>	2002	Other community, social and ...	13 171.00
<i>Moravian-Silesian Region</i>	2002	Other community, social and ...	11 393.00
<i>Czech Republic</i>	2003	Other community, social and ...	13 937.00
<i>Moravian-Silesian Region</i>	2003	Other community, social and ...	11 907.00
<i>Czech Republic</i>	2004	Other community, social and ...	15 682.00
<i>Moravian-Silesian Region</i>	2004	Other community, social and ...	12 242.00
<i>Czech Republic</i>	2005	Other community, social and ...	16 082.00
<i>Moravian-Silesian Region</i>	2005	Other community, social and ...	12 418.00

Conclusion

The Moravian and Silesian Region's population accounts for approx. 12 % of the Czech Republic, the proportion of women moderately exceeds the number of men and it is relatively constant in the specified period. Concerning the age structure, the population in the productive age prevails. The degree of economic activity of population and labour force in the Moravian and Silesian Region shows a declining tendency, but the economically inactive population shows a slightly growing trend. Concerning the age structure, the majority of population in the Moravian and Silesian Region is in the productive age. The degree of economic activity of population and labour force in the Moravian and Silesian Region shows a declining tendency, but the economically inactive population shows a slightly growing trend.

In terms of unemployment in the individual sectors, substantial changes have not occurred but the unemployment has been falling particularly in agriculture and exploitation of minerals, which is a result of the change in the structure in the economy of the Region. In particular, unemployment rate is increasing in the manufacturing industry, in trade, restaurants and accommodation, real estates, services for corporations, healthcare sector, which is related to the growth in employment in the tertiary sphere, although the absolute number in services in the Region has slightly dropped.

The branch and sector structure of the Region shows similar tendencies like in the Czech Republic, the same holding true in terms of the age structure of population. The education structure of the Region's population reflects the previous orientation of the Region to mining and raw material treatment and carries along a number of problems related to the structural unemployment as a result of the Region's restructuring. Therefore, the position of graduates in the Region is not comforting; their number when compared to the Czech Republic is five times higher. The restructuring problem is reflected in the unemployment rate in the Region, which largely exceeds the national average and the individual areas of the Region achieve double amounts. These questions are closely related to the Region's economic performance, which amounts to approx. 10%. The wage level in the Region is the highest in the Czech Republic in finance and insurance industry and the lowest in agriculture; however the gap between the national level and the Region is extending. The benefits of solution of these problems may be seen in the increasing interest of foreign investors in the Region, namely in the area of modern manufacturing industry and sophisticated sectors.

References

1. *Fiala, P., Pitrová, M.*, «Evropská unie », Brno, Centrum pro studium demokracie a kultury, 2003, 743 s.

2. *Jírová, H.*, «Trh práce a politika zaměstnanosti», Praha, VŠE Fakulta národohospodářská, 1999, 95 s.
3. *Mareš, P.*, «*Nezaměstnanost jako sociální problém*», Praha, Sociologické nakladatelství, 1994, 151 s.
4. *Pellešová, P.*, «Vývoj inflace a nezaměstnanosti v ČR v letech 1997—2004», Sborník příspěvků z V. ročníku mezinárodní vědecké konference Hospodářská politika nových členských zemí EU, Ostrava, VŠB- TU, 2005, s.8.
5. *Paulík, T.*, «Hospodářská politika», Karviná, OPF SU, 2002, s.449.
6. *Pellešová, P.*, «Analýza vývoje vybraných ukazatelů trhu práce v Moravskoslezském kraji. »National and regional economics VI, Košice, TU, 2006, s. 294-301.
7. *Sirovátka, T., Mareš, P.*, «*Trh práce, nezaměstnanost, sociální politika*», Brno, MU, 2003, 272 s.
8. *Vorlíček, J., Vostrovská, Z.*, «Úvod do hospodářské a sociální politiky», Praha, Oeconomica, 2005, 96 s.
9. *Vincúr, P. a kol.*, «Teória a prax hospodárskej politiky, 2. vydanie», Bratislava, Sprint, 2006.
10. *Ekonom.* 2007. Praha : Eonomia, a. s. ISSN 1210-0714.
11. http://portal.mpsv.cz/sz/local/fm_info/fm_pro_obcany/absolventi
12. <http://www.czso.cz>
13. http://www.czso.cz/csu/redakce.nsf/i/statisticke_rocenky_ceske_republiky
14. <http://www.czso.cz/xt/edicniplan.nsf/p/13-8101-07>
15. <http://www.mpsv.cz>
16. <http://www.risy.cz/index.php?pid=508&language=CZ&kraj=>
17. <http://www.iriscrr.cz>
18. <http://www.euroskop.cz>

The article was received by the editorial board on 13.05.2008